

Solenoid Valve

ZCM Series 2/2-Way Zero Pressure differential Gas Solenoid Valve

● The Professional Solenoid Valves Manufactory

Using

This series valve provide on-off control coal gas, natural gas, and other combustion fluid media, they also can control other low pressure fluids

Characteristics

Special construction, low pressure
They are capable of operating at zero pressure differential, and have large flow.
Use high quality seals, no leaking.
Best position is solenoid vertical and upright direction, Flow as the arrow.

Explosion- proof coil and be fitted
(for orifice under 25MM only)

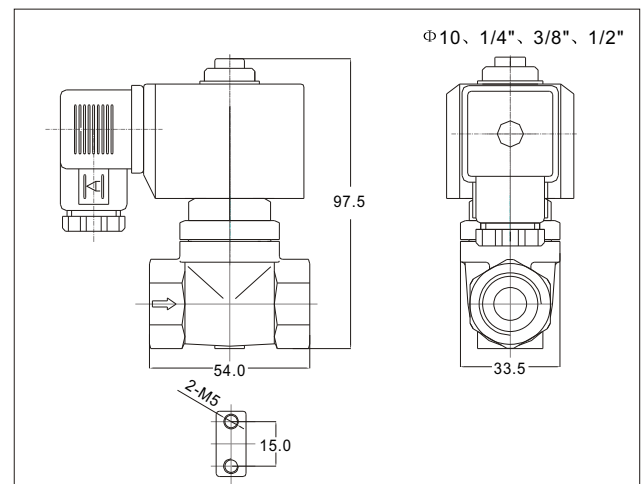
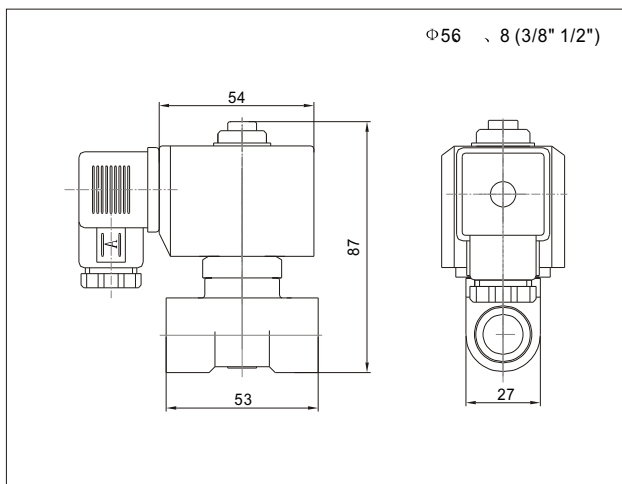
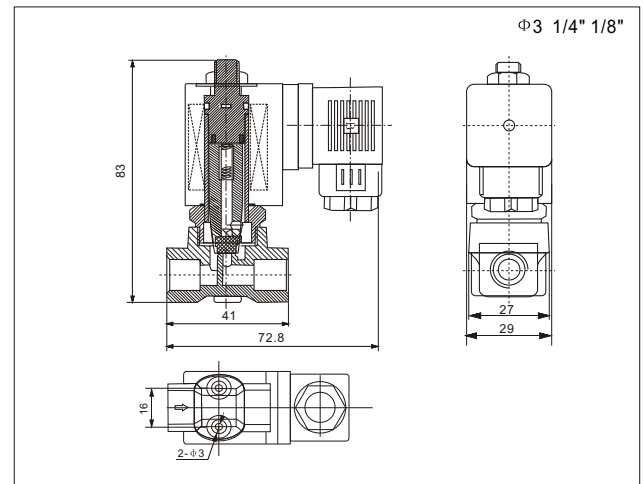
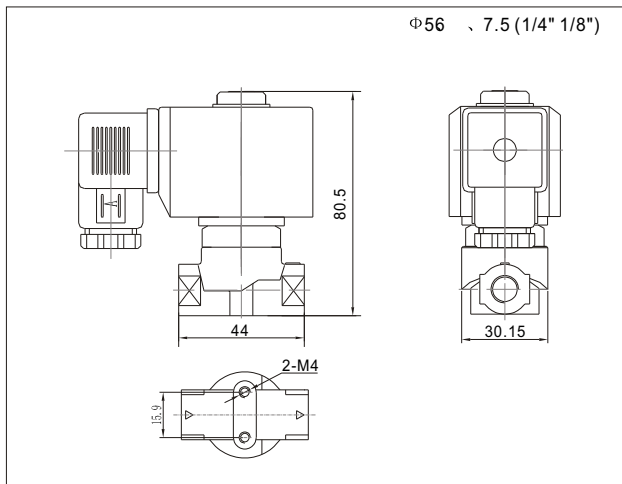
Explosion-proof certification NO.:

Refer to standard: Gb3836 • 9

Explosion-proof Symbol: Exm I/II T4



External Dimensions Chart



ZCM Series Zero Pressure differential Gas Solenoid Valve

● The Professional Solenoid Valves Manufactory

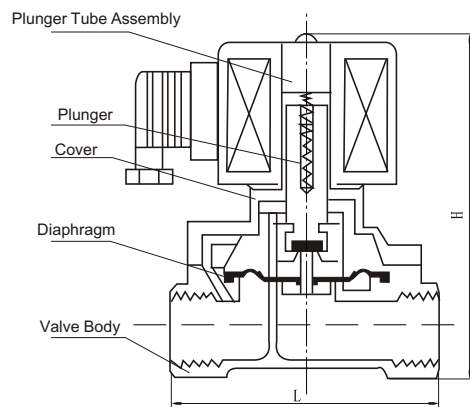
Parameters

Orifice (mm)	3	5	6	8	10	15	20	25	32	40	50	65	80	100	
CV Factor	0.3	0.6	0.7	1.0	1.7	4.6	7.6	12	20	28	46	75	90	160	
Max. kgf/cm ²	5	3	2.5	0.5	0.3	2.5			1.0			0.6			
Fluid Media	Coal Gas\Natural Gas\Other Normally Gas and Fluids etc														
Seals	N B R														
Fluid Temp	- 5 ~ + 6 0°C														
Voltage	A C : 2 2 0 V				1 1 0 V			3 6 V		2 4 V		D C : 2 4 V		1 2 V	
Power Consumption	1 5 W								3 0 W				5 0 W		

SLP Series Coils Characteristics List (compact directacting) (Normally Closed)

SLP Series Coils Characteristics List	Orifice mm	pipesize	Body
ZCM-3	3	1/8"	Forged Brass
ZCM-3	3	1/4"	
ZCM-5	5	1/8"	
ZCM-5	5	1/4"	
ZCM-5	5	3/8"	
ZCM-5	5	1/2"	
ZCM-6	6	3/8"	
ZCM-6	6	1/2"	
ZCM-8	7.5 (8)	3/8"	
ZCM-8	7.5 (8)	1/2"	
ZCM-10	10	3/8"	
ZCM-10	10	1/2"	

Construction, External Dimensions chart (Large size)



Note: Pls suffix "E" as Explosion-preef valve

SLP Series Coils Characteristics List (Large size directacting) (Normally Closed)

SLP Series Coils Characteristics List	Orifice mm	pipesize	L(mm)	H(mm)	Body Material
ZCM-15	15	1/2"	69	117	Bass
ZCM-20	20	3/4"	73	123	
ZCM-25	25	1"	99	135	
ZCM-32	32	1 1/4"	112	175	
ZCM-40	40	1 1/2"	123	175	
ZCM-50	50	2"	168	209	
ZCM-40F	40	4—φ 17.5Hole aperture φ 110Hole distance	155	210	Cast iron
ZCM-50F	50	4—φ 17.5Hole aperture φ 125Hole distance	200	240	
ZCM-65F	65	4—φ 17.5Hole aperture φ 145Hole distance		290	
ZCM-80F	80	4—φ 17.5Hole aperture φ 160Hole distance	270	310	
ZCM-100F	100	4—φ 17.5Hole aperture φ 180Hole distance	350	350	