

Solenoid Valve

SLC Series Home Use Water Drink Machine Solenoid Valve

● The Professional Solenoid Valves Manufactory

SLC Water Valve

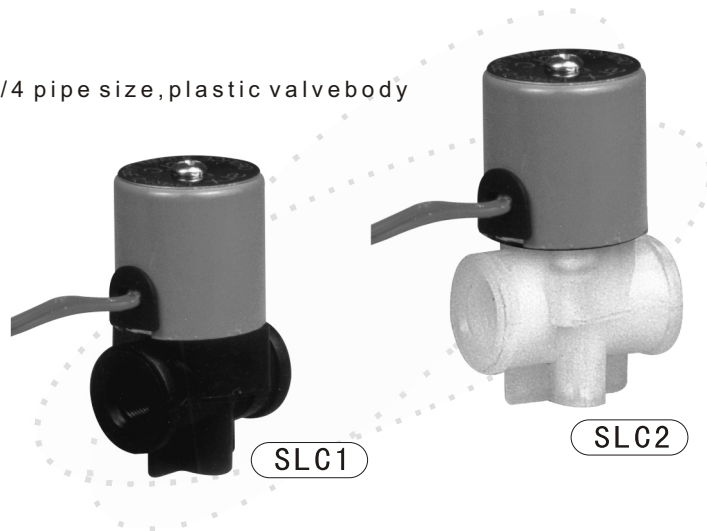
2-way normally closed, 1/8 & 1/4 pipe size, plastic valve body

Specification

Direct acting, Normally closed
Response time: 6~20MSEL
Mounting: Solenoid vertical and upright direction. Fixing screw M5

Using

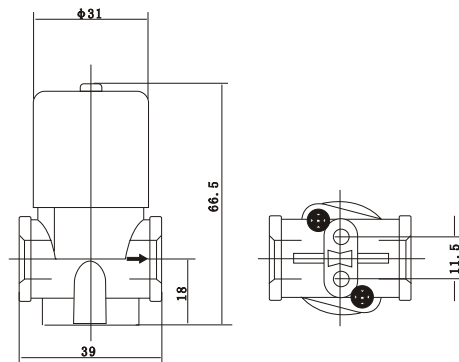
Fluid media: water
Fluids temp.: 0°C ~ 100°C
Ambient temp.: -10°C ~ +40°C



Characteristics

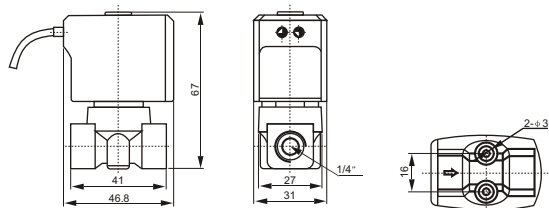
Power consumption: AC 6.8VA (Holding) DC 5W
Voltage: AC: 24V 110V 220V 50/60Hz, DC: 24V
Voltage Tolerance: -10%
Coil class: Class B 130
Duty cycle: 100%
lead length: 30 CM(12)

Construction, External Dimensions Chart



Component Material

Plunger: UJ117
Seals: EPDM
Body: PP, 1/8(black), 1/4(white), nylon66
Shading Ring: red copper



SLC5~6

Technical Parameter

Pipe size	Orifice	CV	Operating Pressure PSI			Model Code
			MIN	MAX-AC	MAX-DC	
1/8"	2.5(3/32)	0.21	0	120	120	SLC1
1/4"	2.5(3/32)	0.21	0	120	120	SLC2
1/8"	3.0	0.23	0	100	100	SLC5
1/4"	3.0	0.23	0	100	100	SLC6

SLC Series Home Use Water Drink Machine Solenoid Valve (out let)

● The Professional Solenoid Valves Manufactory

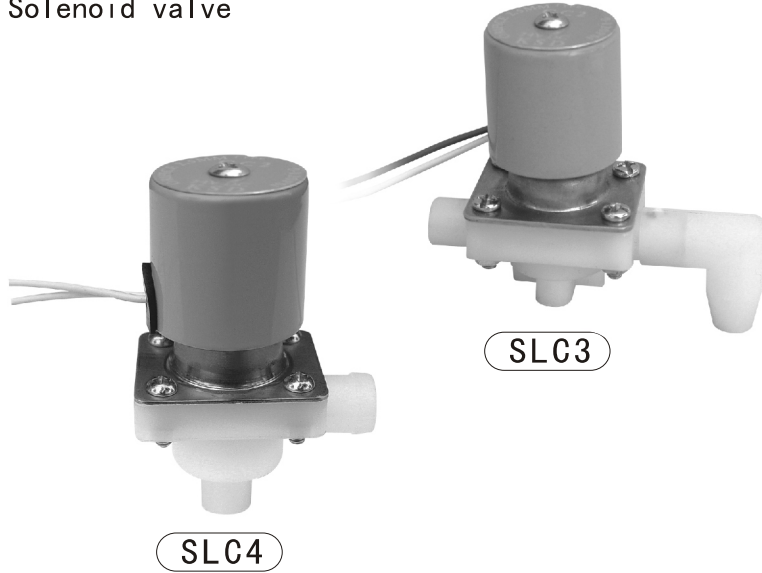
2-way normally closed, plastic Solenoid valve

Characteristics

special diaphragm for foods and separate type

Specification

Direct acting ,
Response time:10~50MSEL
Mounting: Solenoid vertical and upright direction.
Fixing screw M4 for SLC-3
Fixing screw M3 for SLC-4



Using

Fluid media: water
Fluids temp.:0℃~100℃
Ambient temp.: -10℃~ +40℃

Characteristics

Voltage: DC12V DC24V
Coil Class: CLASS B 110℃
lead length:30CM



Voltage tolerance

-10%~+10%

Technical Parameter

Model Code	Pipe Size	Orifice Water	Column mm
SLC3	12	8	600
SLC4	12	9	600

Component Material

Plunger: IJ117
Seals: Silica Gel
Body: PP

Construction Dimensions Chart

